

На день Св. Троицы, глас 4

Ра - ду - и - ся Ца - ри -

це ма - те -

- ре - мо и де - ва -

мо сла - ва ве - ся -

ка бо до - бро - гла -

- се - на



бо - го - гла - го - ли -



- ва у -



- ста му - дря - ще -



- ся не мо - гу -



те Те - бе



во - спе - ти до - сто - и -

НО НИ -

30 у - ме - е - те

же ра - зу - мо ве -

ся - ко Тво - е - го

ро - же - ства ра - зу - ме -

- ти



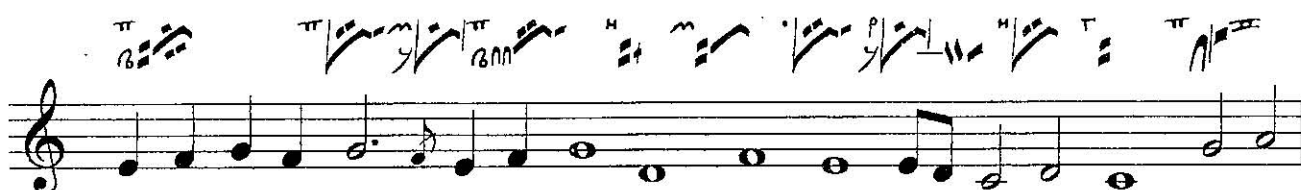
те - ме



же



Тя со -



гла - се - но сла -



ви -



мо.



Ирмосы. Глас 4. Песнь 9. Ирмос і49р



Ра_ дѣи_сл_ца_ри_ - це ма_ те_ ремъ и дѣ_



- вамъ сла_ ва все_ ка бо до_бро_ гла_ сна бла_ го_



гла_ го_ ли_ ва оу_ста мѣ_др_ца_ а_ са не мо_ гѣтъ те_

бе во_спѣ_ти до_стой_но ни_ до_оу_мѣ_ етъ же

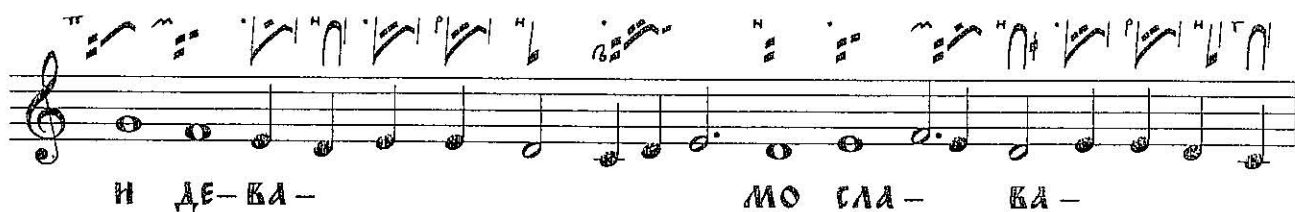
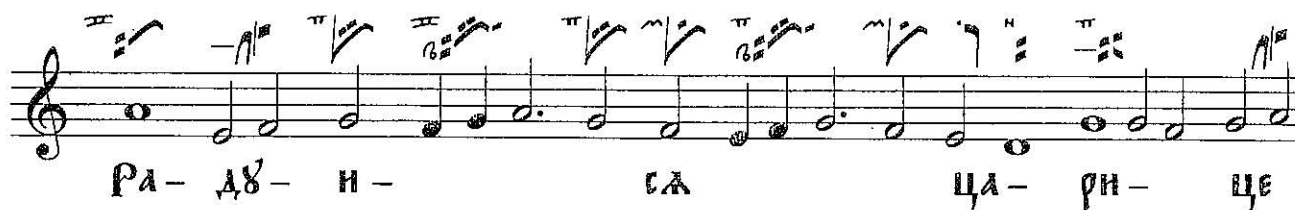
ра_ зѣмъ велик' тво_е_ го ро_же_ства ра_ зѣ_мѣ_ ти

тѣ_мже та_ со_ гла_ сно сла_ - вимъ.

На Троицын день.

Глас 4.

Поморский Окход.

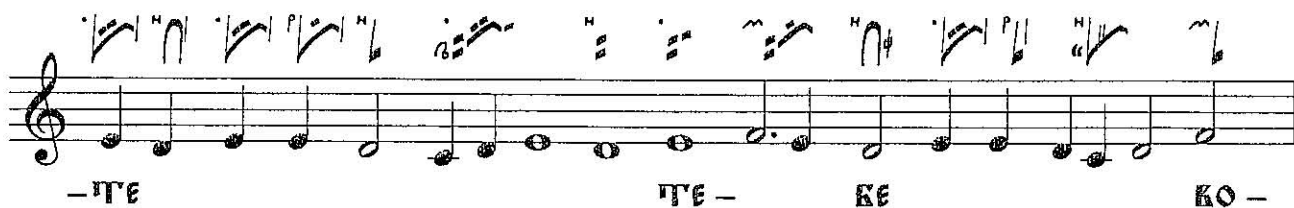




-ВА 8- СГА М8-



-ДРА- ЦЕ- СА НЕ МО- Г8-



-ТЕ ТЕ- РЕ КО-



-СПЕ- ТИ ДО- СТО- И- НО



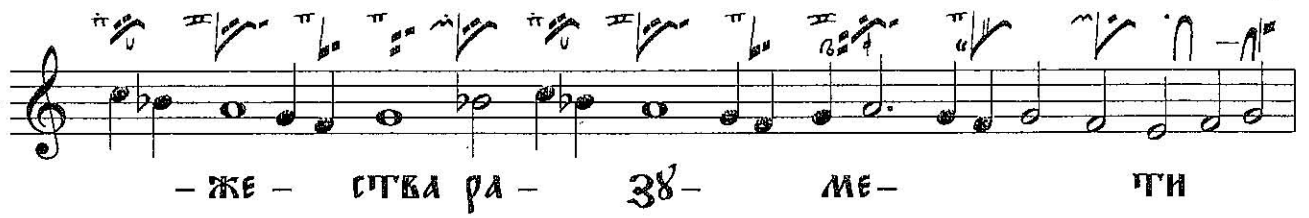
НИ- 30 8- МЕ-



-Е- ТЕ ЖЕ РА- 38- МО РЕ-



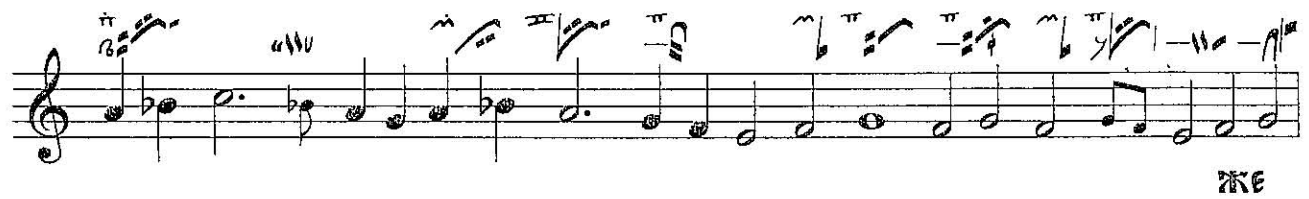
-СА- КО ПЬО-Е-ГО РО-



-ЖЕ- СІВА РА- ЗЪ- МЕ- ПИ



ПЕ- МЕ



ЖЕ



ТА СО-



-ПА- СЕ- НО ПА-

A musical staff in treble clef with a key signature of one flat (B-flat). The staff contains a sequence of notes and chords. Above the staff, there are several groups of notes with stems and beams, some with accents, likely representing fingerings or specific articulations for the notes below. The notes on the staff include quarter notes, eighth notes, and sixteenth notes.

- BH -

A musical staff in treble clef with a key signature of one flat (B-flat). The staff contains a sequence of notes and chords. Above the staff, there are several groups of notes with stems and beams, some with accents, likely representing fingerings or specific articulations for the notes below. The notes on the staff include quarter notes, eighth notes, and sixteenth notes.

- MO -

A musical staff in treble clef with a key signature of one flat (B-flat). The staff contains a sequence of notes and chords. Above the staff, there are several groups of notes with stems and beams, some with accents, likely representing fingerings or specific articulations for the notes below. The notes on the staff include quarter notes, eighth notes, and sixteenth notes.